

Monocrystalline Solar Module

515W-550W Mono

182MM Cell 144 Half-cell Layout

黄山银洽新能源

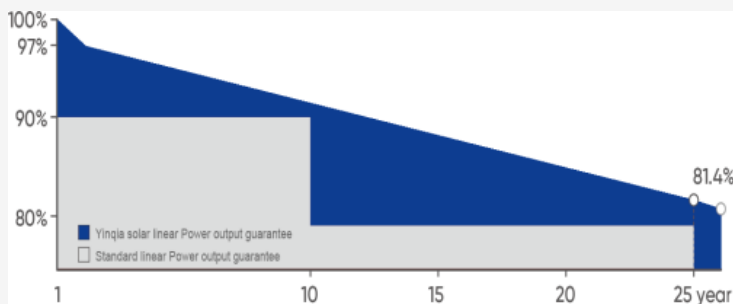
YinQia SOLAR

Features

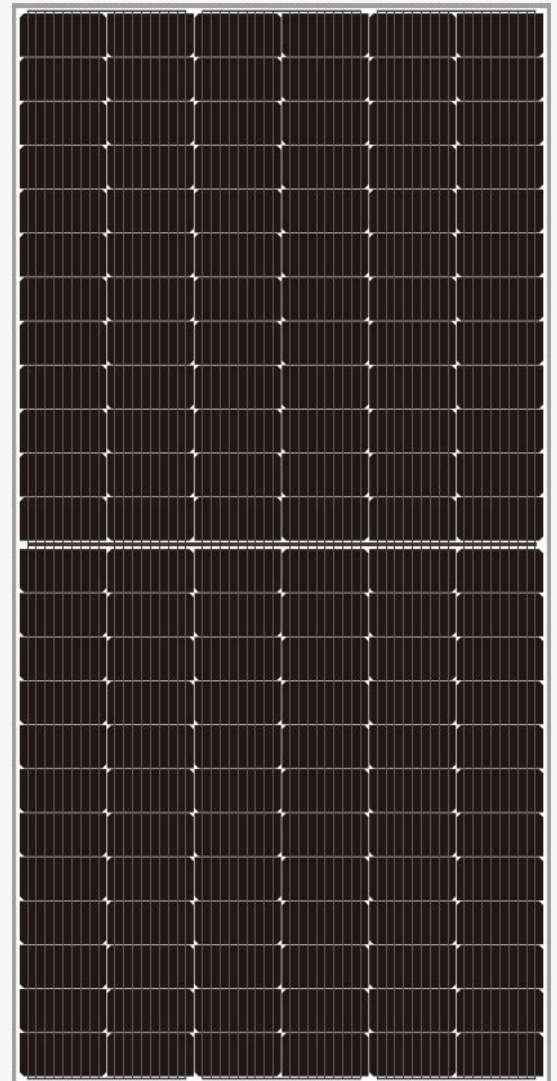
- ◆ High cell efficiency with quality silicon material for long term output stability and reliability
- ◆ Rigorous quality control to meet highest international standards
- ◆ High transmittance low iron tempered glass with enhanced Stiffness and impact resistance
- ◆ Unique frame design with high mechanical strength for easy installation
- ◆ Advanced encapsulation material with multiplayer sheet lamination to provide efficient protection from the severest environmental conditions
- ◆ Outstanding electrical performance under high temperature and low irradiance conditions

Applications

- ◆ Any large or small on-grid or off-grid solar power stations
- ◆ Commercial and industrial building roof-top systems
- ◆ Residential roof-top systems
- ◆ Any commercial or industrial ground mount systems
- ◆ Other industrial or commercial applications



Linear performance Warranty



- . ISO9001:2015QMS
- . ISO14001:2015EMS
- . ISO45001:2018OHSMS
- . IEC/EN 61215, IEC/EN 61730 Standard

12
YEARS

Quality
Warranty

25
YEARS

Power
Warranty



HUANGSHAN YINQIA NEW ENERGY TECHNOLOGY CO.,LTD.

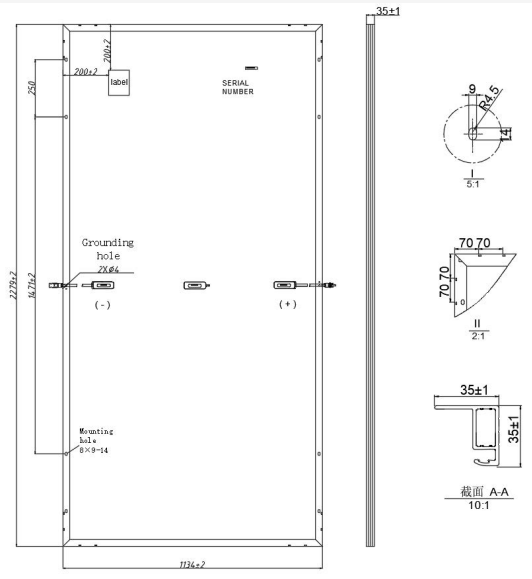
ADD: YANGXI ROAD, HUANGSHAN INDUSTRIAL PARK, HUANGSHAN REGION, HUANGSHAN, ANHUI, CHINA

TEL: +86 559 8515292 | FAX: +86 559 8515296 | sales@yinqiasolar.com

www.yinqiasolar.com

MECHANICAL CHARACTERISTICS

Solar Cells	Mono
NO.of Cells	144(6×24)
Dimensions	2279×1134×35mm
Weight	27.5kgs
Front Glass	3.2mm coated tempered glass
Frame	Anodized aluminium alloy
Junction Box	Ip68 rated(3 by pass diodes)
	4.0mm²
Output Cables	300mm
	Length can be customized
Connectors	Mc4 compatible
Mechanical load test	5400Pa



ELECTRICAL PARAMETERS

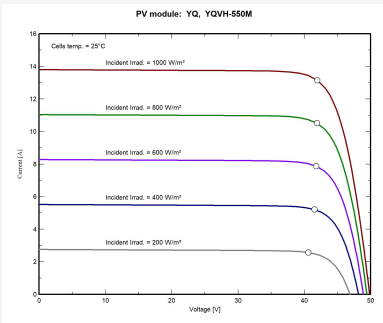
POWER CLASS	YQVH-515M		YQVH-525M		YQVH-535M		YQVH-540M		YQVH-550M	
	STC	NOCT	STC	NOCT	STC	NOCT	STC	NOCT	STC	NOCT
Maximum power (Pmax)	515W	386W	525W	394W	535W	401W	540W	405W	550W	413W
Open Circuit Voltage (Voc)	48.81V	45.76V	49.08V	46.04V	49.38V	46.38V	49.53V	46.55V	49.83V	46.89V
Short Circuit Current (Isc)	13.3A	11.11A	13.39A	11.25A	13.54A	11.38A	13.63A	11.45A	13.79A	11.57A
Voltage at Maximum power (Vmpp)	40.33V	37.51V	40.58V	37.74V	40.88V	38.02V	41.03V	38.16V	41.03V	38.44V
Current Maximum Power (Impp)	12.77A	10.3A	12.95A	10.43A	13.1A	10.55A	13.17A	10.61A	13.3A	10.73A
MODULE EFFICIENCY (%)	19.9		20.3		20.7		20.9		21.3	

STC:Irradiance 1000W/m²,cell temperature 25℃,AM 1.5G NOCT:Irradiance 800W/m²,ambient temperature 20℃,wind speed 1m/s,AM 1.5G

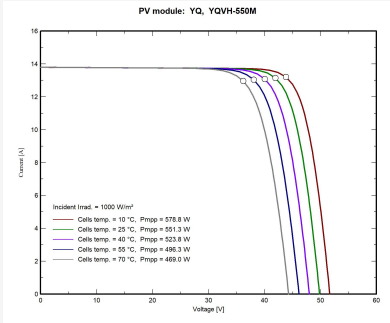
PACKING CONFIGURATION

Container	20'GP	40'HQ
Pieces per pallet	31	31+31
Pallets per container	8	10
Pieces per container	248	620
Dimension/Pallet	1214×1138 mm	2339×1138 mm
Gross weight/pallet	828Kg	1753Kg

I-VCURVE



YQVH-550M/I-V



OPERATING CHARACTERISTICS

Operating Module Temperature	-40℃ to +85℃	Nominal Operating Temperature (NOCT)	45±2℃
Maximum System Voltage	1500 DC (IEC)	Temperature Coefficient of Pmax	-0.36%℃
Maximun Series Fuse Rating	20A	Temperature Coefficient of Voc	-0.28%℃
Power Tolerance	0/+5W	Temperature Coefficient of Isc	+0.05%℃

Note: Due to continuous technical innovation, R&D and improvement ,technical data above mentioned may be of modification accordingly. YQ SOLAR have the sole right to make such modification at anytime without further notice.